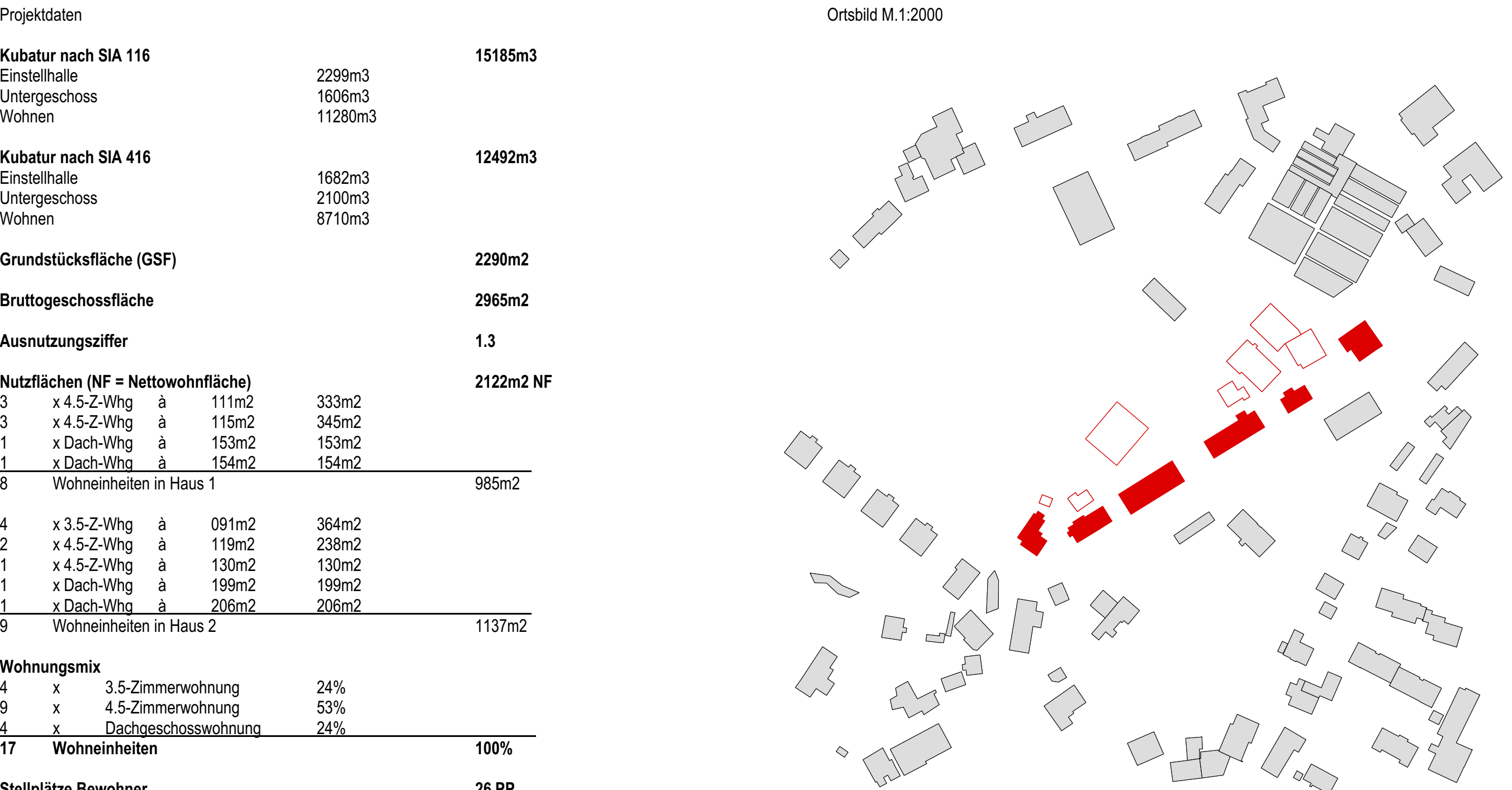
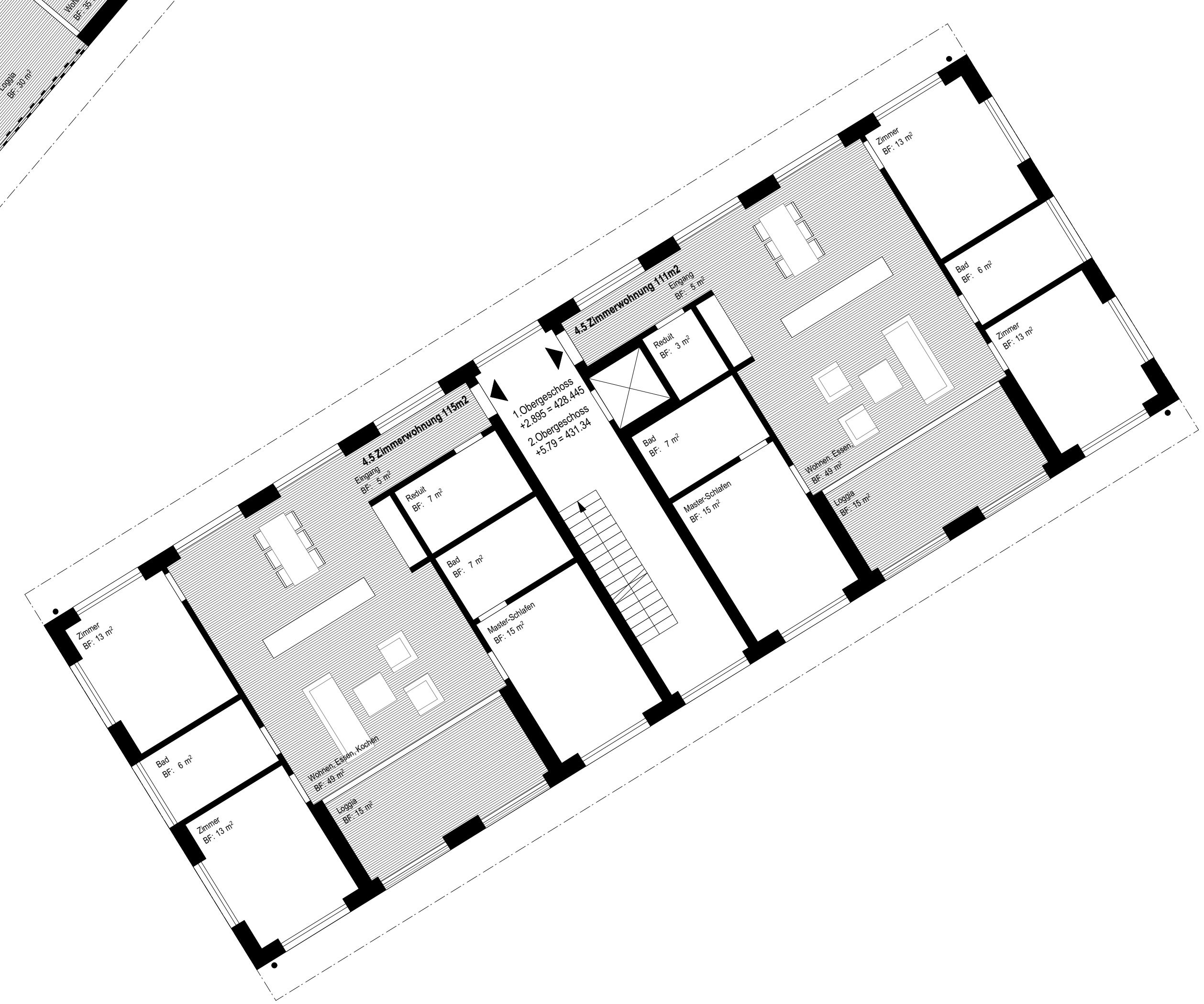
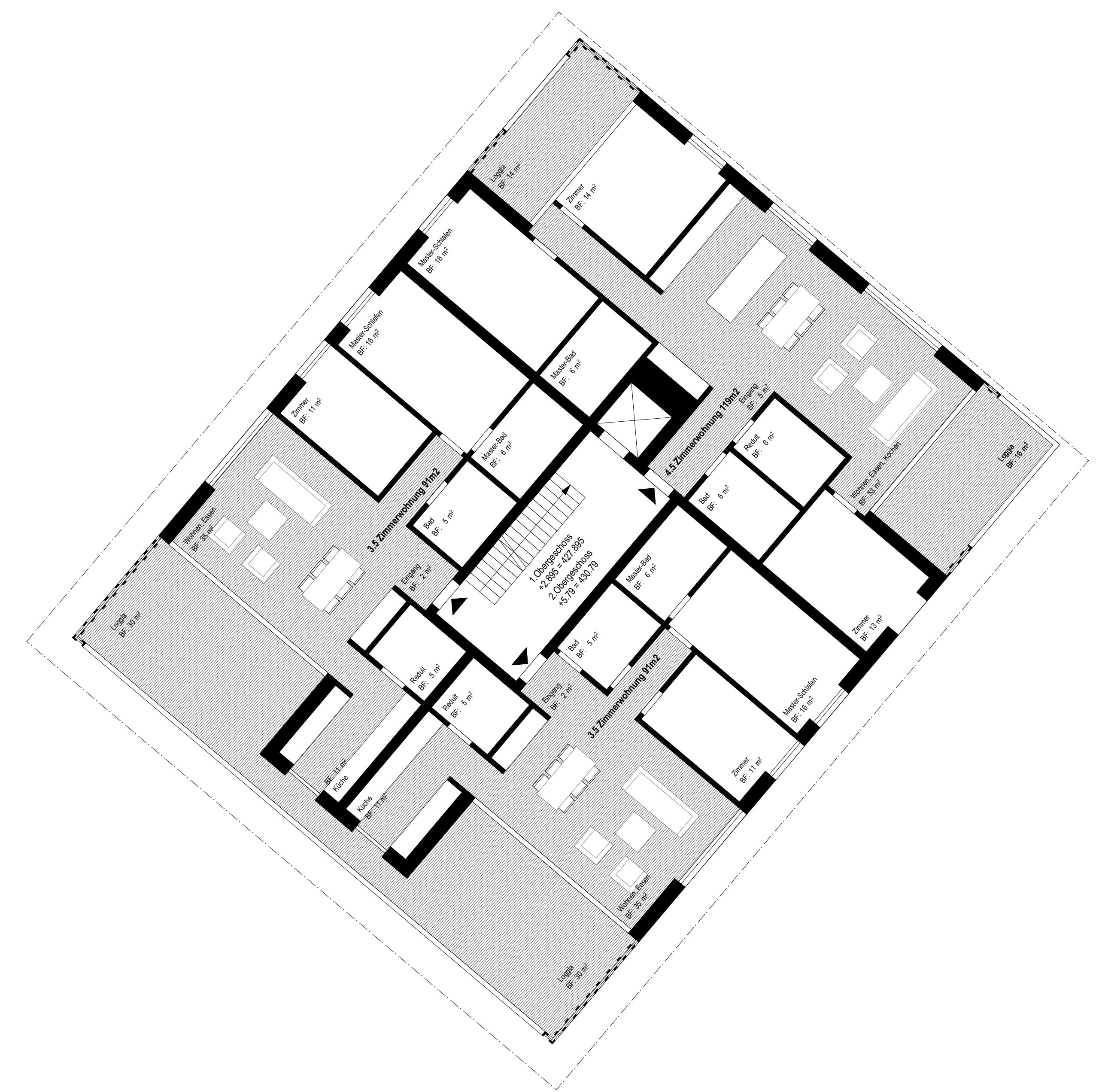
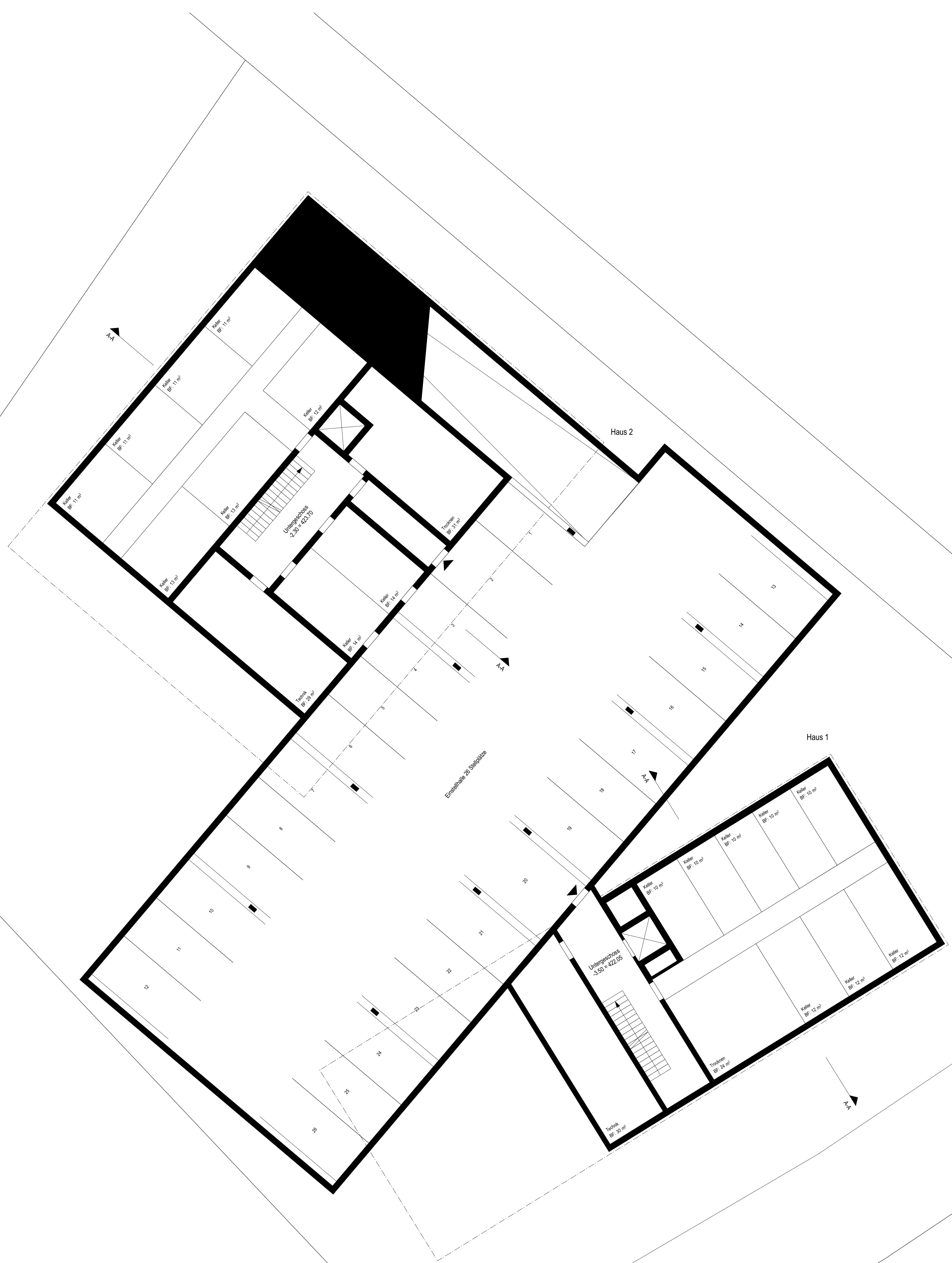
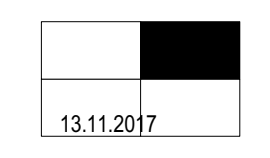


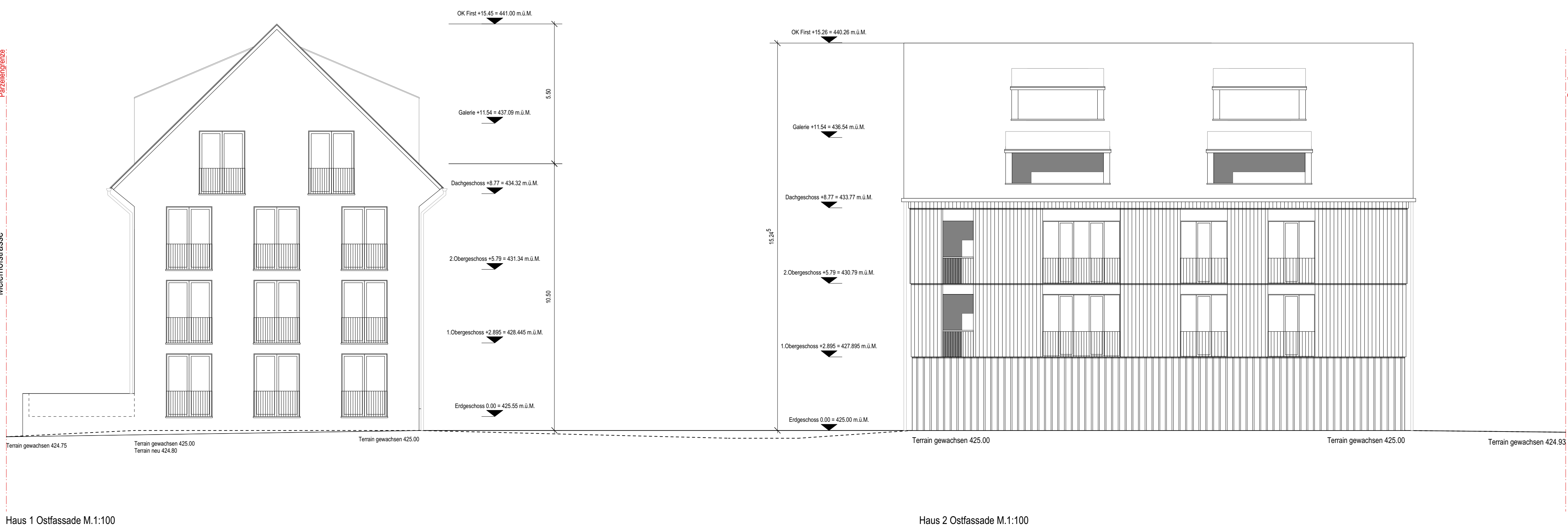
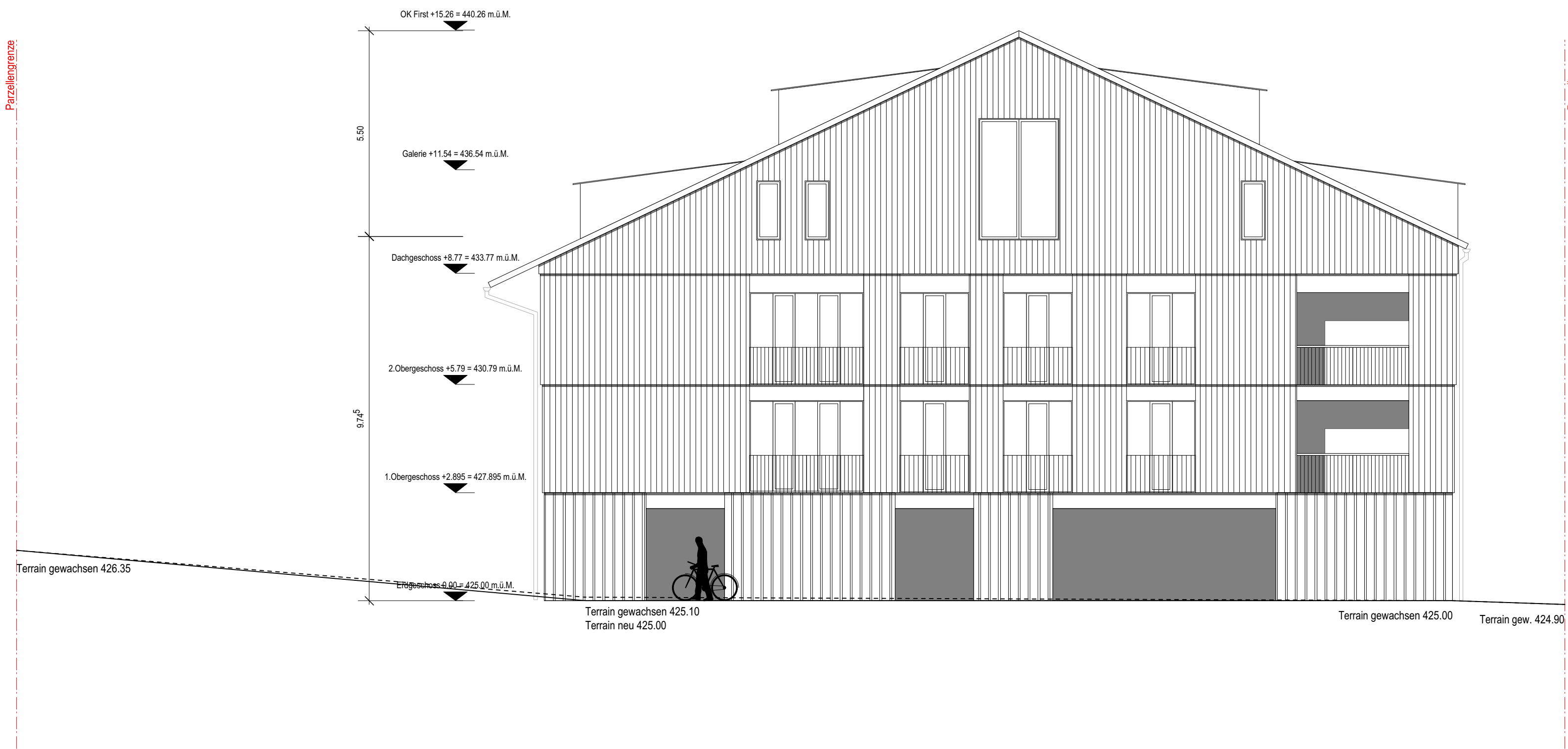
| | | |
|------------------------------------|---------|-----------|
| Projektdaten | | |
| Kubatur nach SIA 116 | | |
| Einstellhalle | 2299m3 | 15185m3 |
| Untergeschoss | 1608m3 | |
| Wohnen | 11280m3 | |
| Kubatur nach SIA 416 | | |
| Einstellhalle | 1682m3 | 12492m3 |
| Untergeschoss | 2100m3 | |
| Wohnen | 8710m3 | |
| Grundstücksfläche (GSF) | | |
| | 2290m2 | |
| Bruttogeschossfläche | | |
| | 2965m2 | |
| Ausnutzungsziffer | | |
| | 1.3 | |
| Nutzflächen (NF = Nettowohnfläche) | | |
| | | 2122m2 NF |
| 3 x 4.5-Z-Whg | 111m2 | 333m2 |
| 3 x 4.5-Z-Whg | 115m2 | 345m2 |
| 1 x Dach-Whg | 153m2 | 153m2 |
| 1 x Dach-Whg | 154m2 | 154m2 |
| 6 Wohneinheiten in Haus 1 | | 985m2 |
| 4 x 3.5-Z-Whg | 091m2 | 364m2 |
| 2 x 4.5-Z-Whg | 119m2 | 238m2 |
| 1 x 4.5-Z-Whg | 130m2 | 130m2 |
| 1 x Dach-Whg | 199m2 | 199m2 |
| 1 x Dach-Whg | 206m2 | 206m2 |
| 9 Wohneinheiten in Haus 2 | | 1137m2 |
| Wohnungsmix | | |
| 4 x 3.5-Zimmerwohnung | 24% | |
| 9 x 4.5-Zimmerwohnung | 53% | |
| 4 x Dachgeschosswohnung | 24% | |
| 17 Wohneinheiten | | 100% |
| Stellplätze Bewohner | | |
| | 26 PP | |
| Stellplätze Besucher | | |
| | 5PP | |
| Stellplätze Velo | | |
| | 60 PP | |



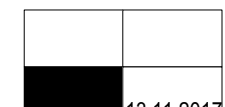
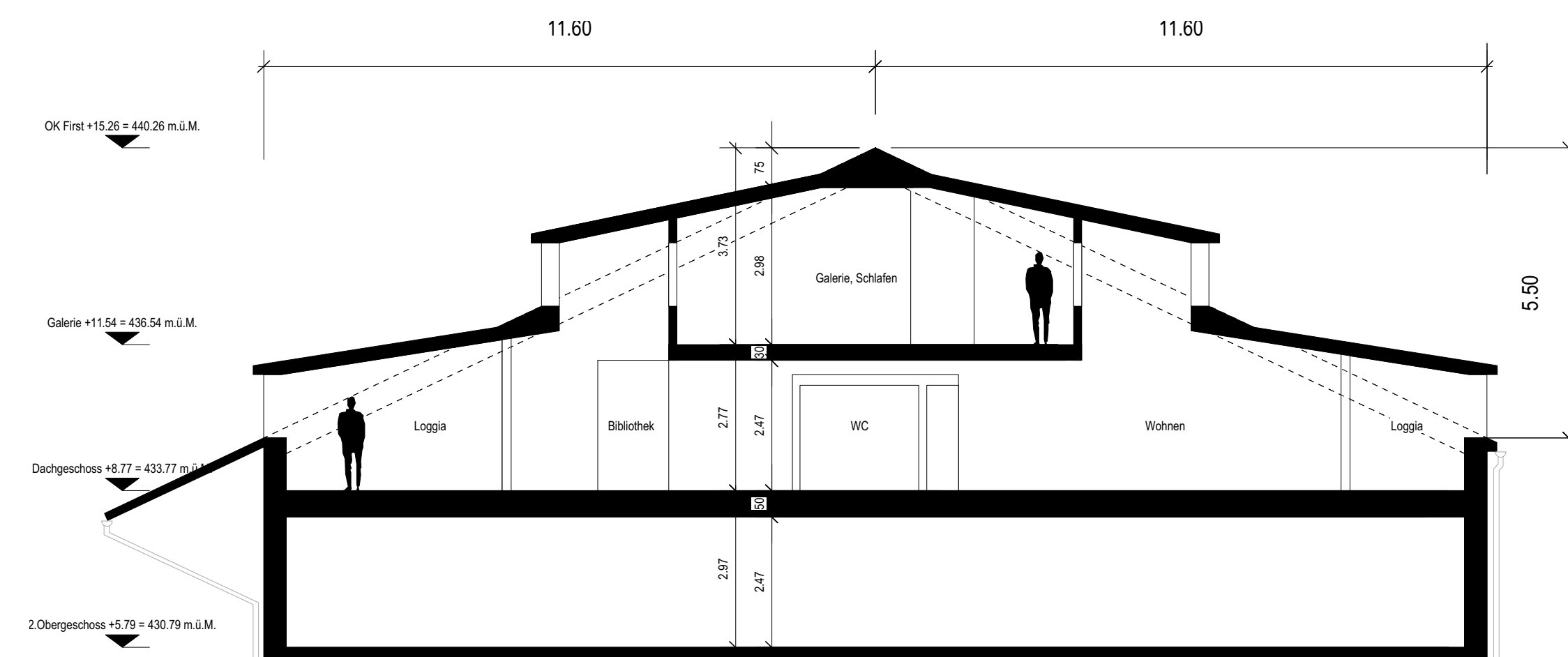
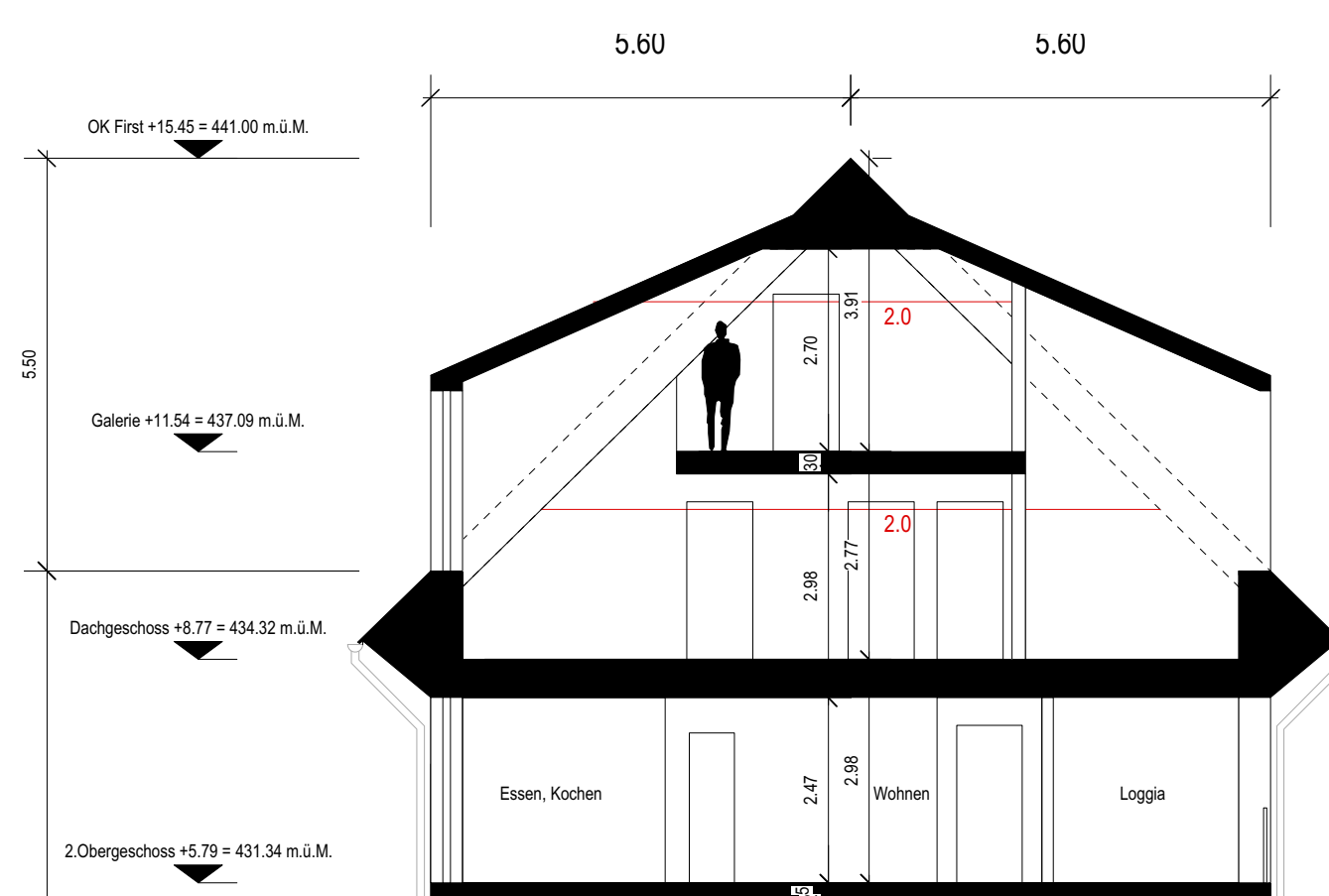
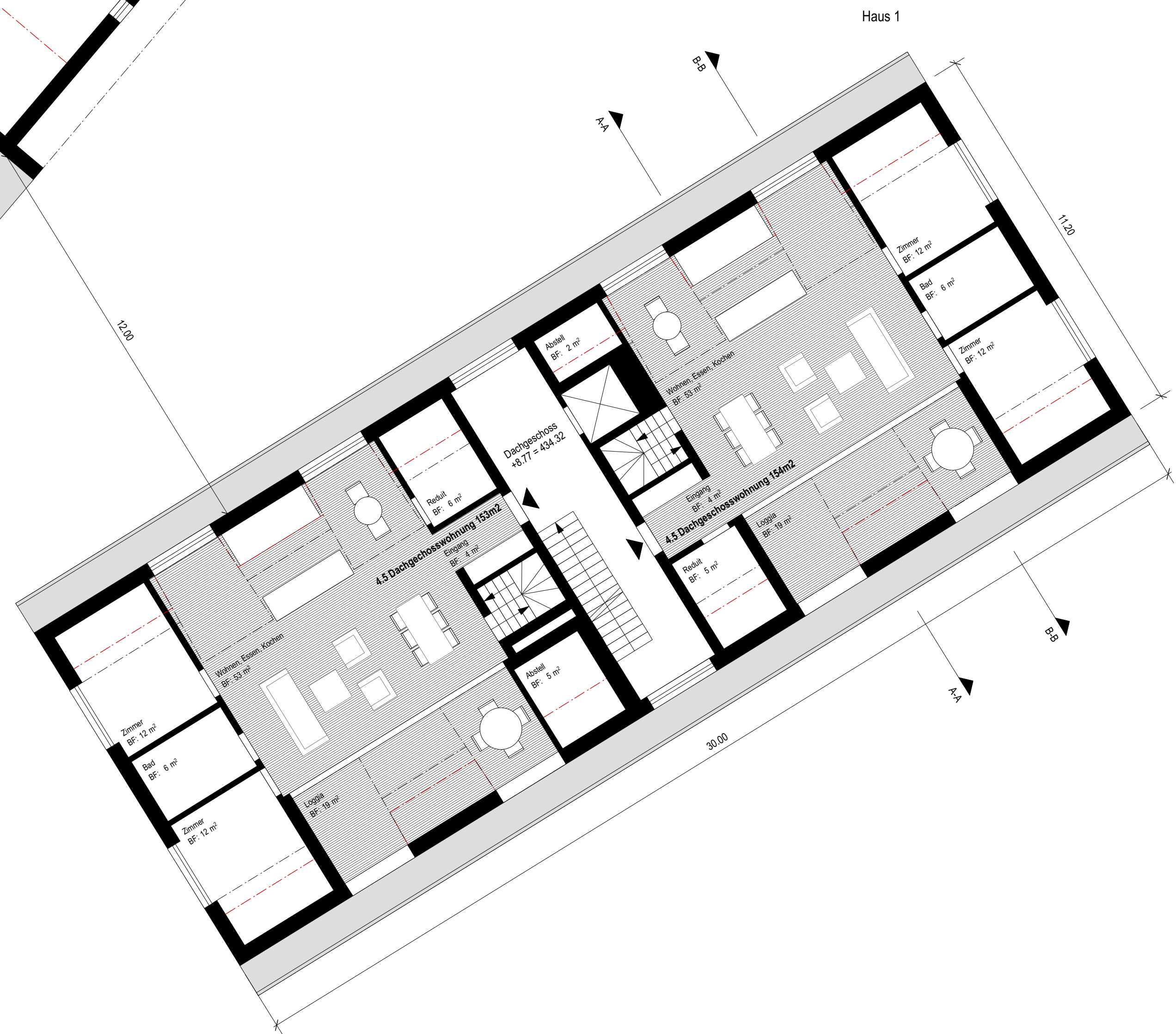


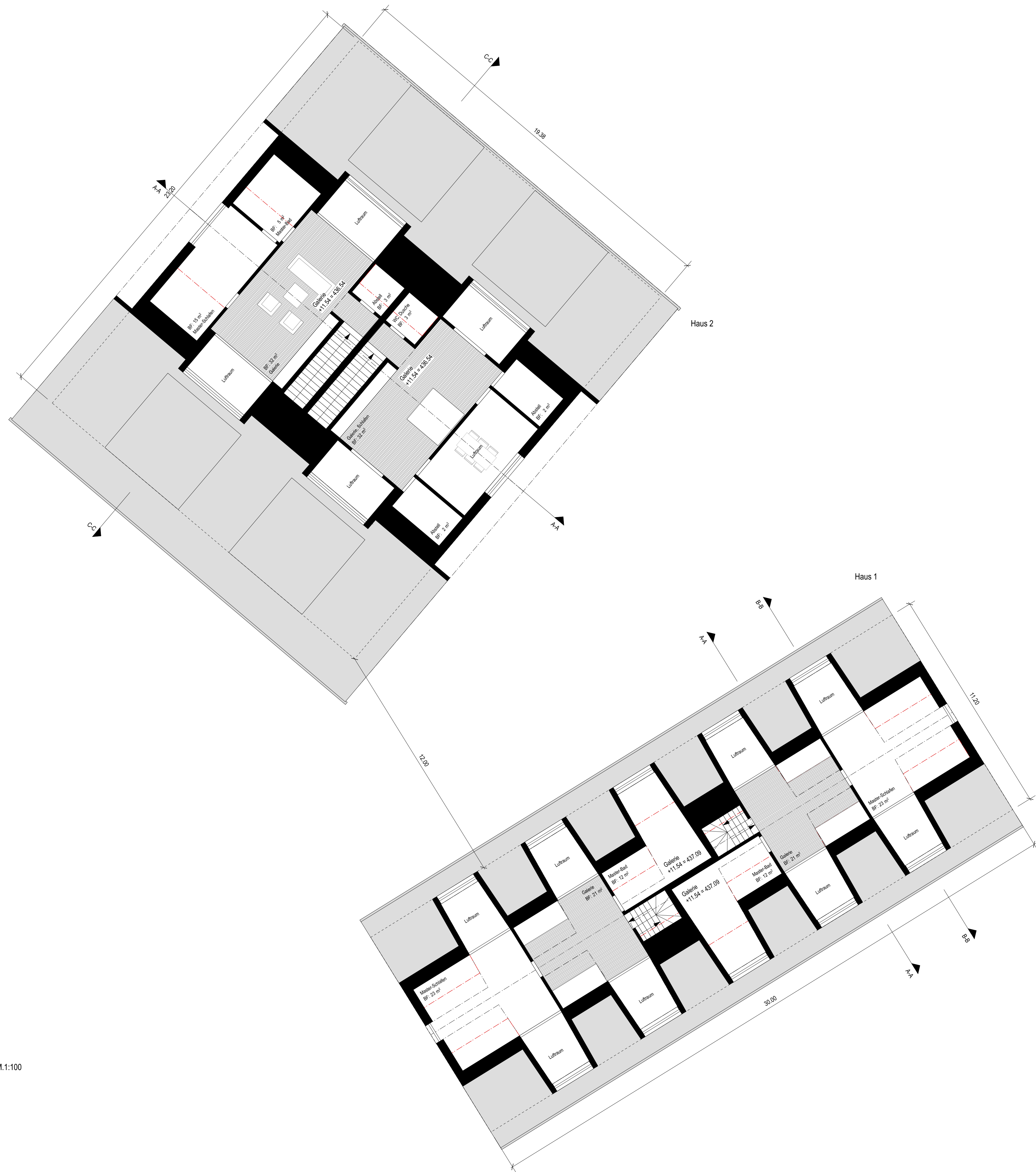


Haus 2 Südseite M.1:100



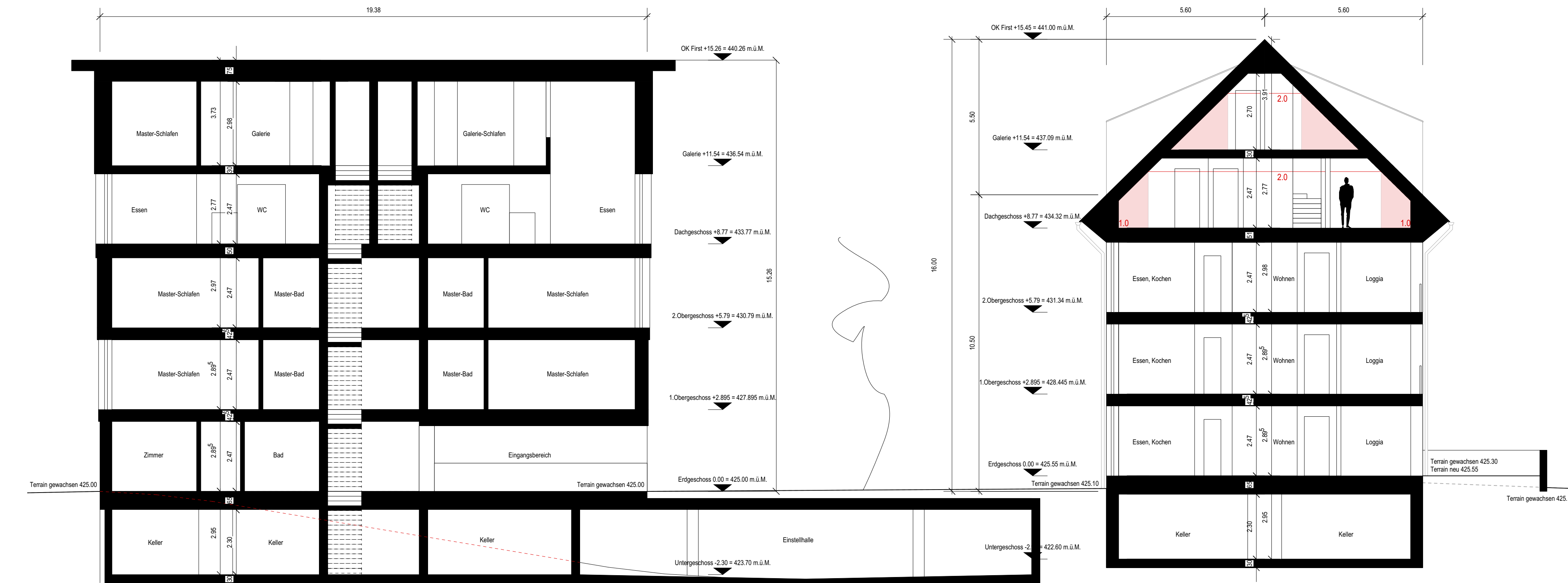
Dachgeschoss M.1:100





Galeriegesschoss M.1:100

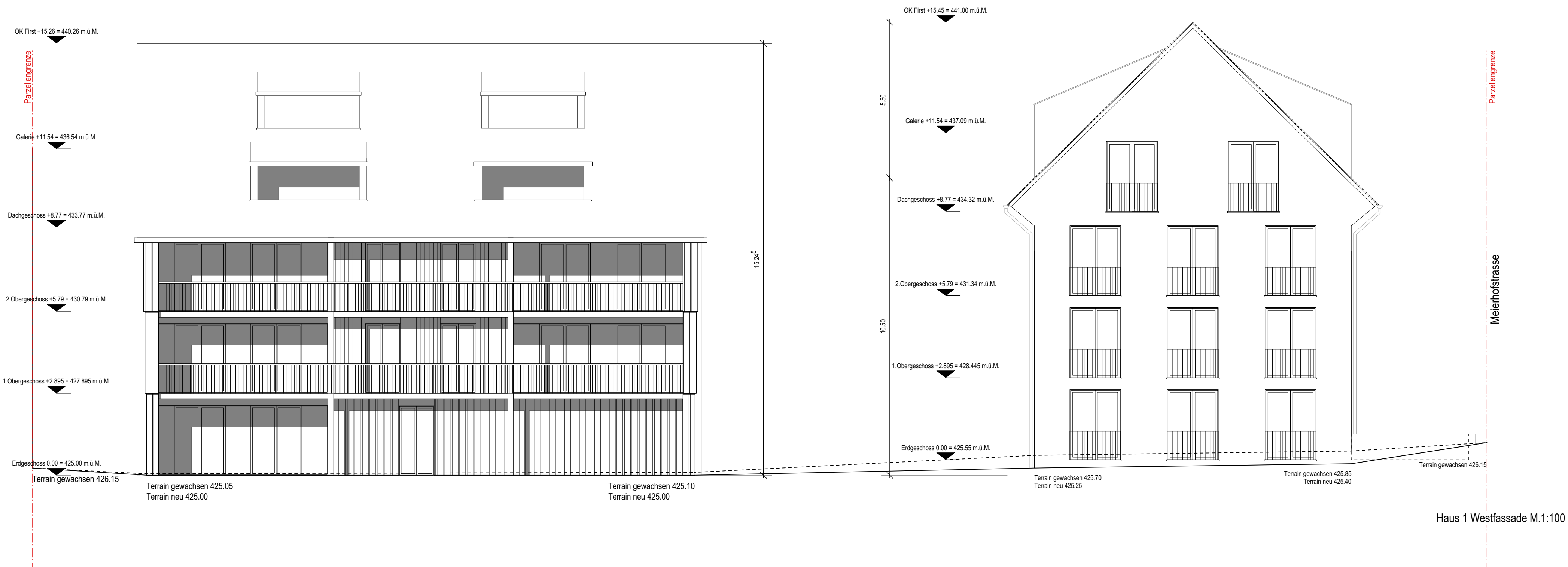
Schnitt A-A M.1:100



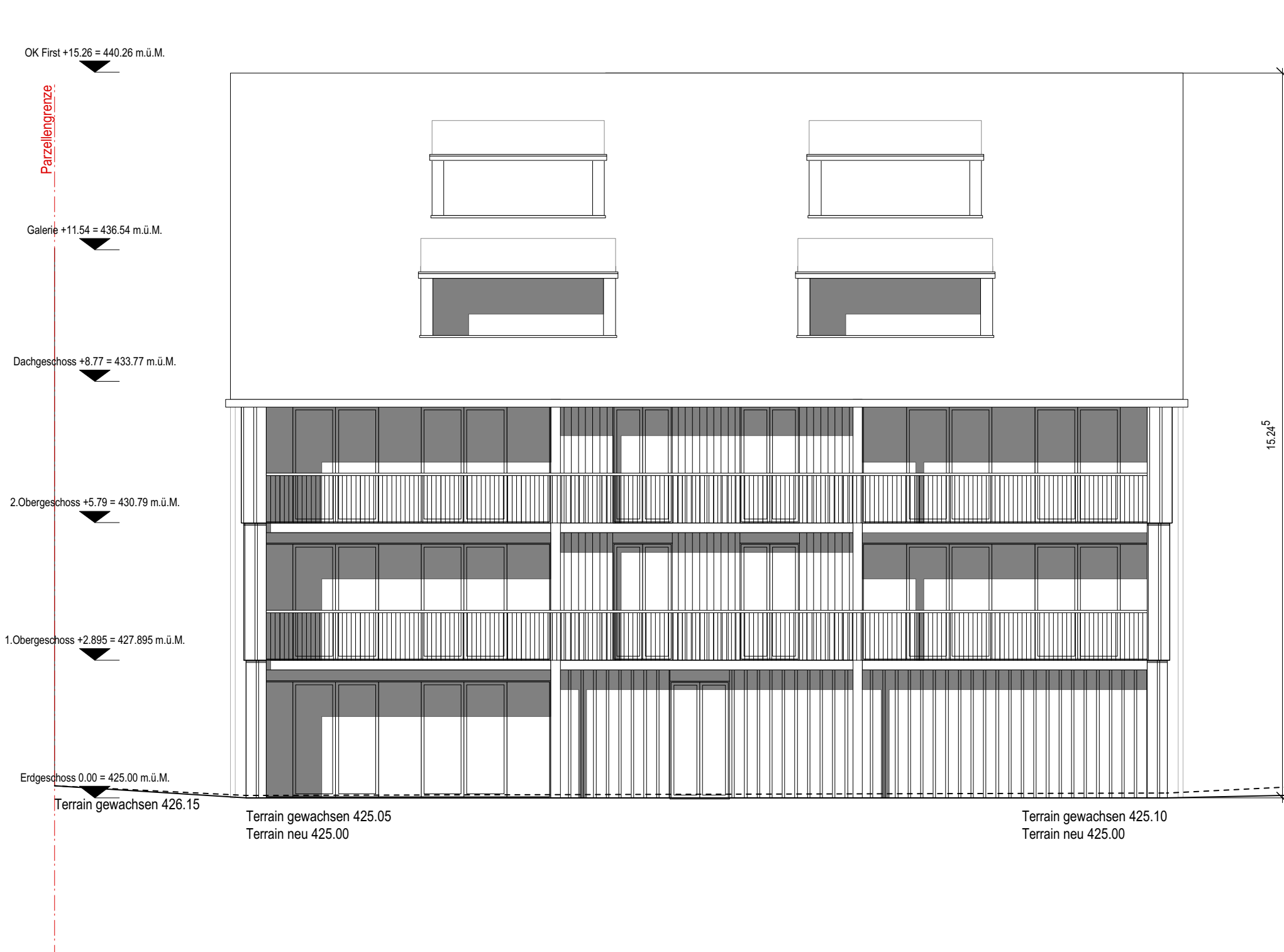
Haus 1 Nordfassade M.1:100



Haus 2 Nordfassade M.1:100



Haus 1 Westfassade M.1:100



Haus 2 Westfassade M.1:100

